

| Power Transformer | | (Equipped with static shield, magnetic shield) | | | |
|--------------------|----------------|---|--|-----------------|--|
| Model | Specifications | | | Size Weight(Kg) | Applications |
| | Primary | Secondary | | | |
| PT-400B | 100V | 20V-0-280V-320V-360V-720mA AC (450mA DC; Bridge rectifier) 75V-0-75V-0.15A, 6.3V-4A(×2), 6.3V-2A(×2) | | WE-114 (8.1) | KT88, EL34, EL156 |
| New PT-310B | 100V | 0-10V-160V-180V-800mA AC (500mA DC; Bridge rectifier) 280V-0.1A, 80V-0.1A, 6.3V-6.6A(×2), 6.3V-2.5A | | PB-114 (5.9) | 6C33C |
| PT-300B | 100V | 20V-0-280V-310V-350V-530mA AC (330mA DC; Bridge rectifier) 0-70V-0.12A, 6.3V-3.5A(×2), 6.3V-2A(×2) | | PB-114 (5.9) | KT88, KT66, EL34, 6L6GC |
| PT-270 | 100V | 320V-280V-0-60V-280V-320V-275mA AC (390mA DC; Full-wave rectifier) 0-2.5V-6.3V-5A(×2), 6.3V-2.5A, 5V-3A | | PB-114 (5.8) | KT88, KT66, VT52, 6L6GC, EL34/6CA7 6550A, 6B4G, 12E1, 2A3, 6L6G/CV1947 |
| PT-260 | 100V | 480V-420V-240V-0-240V-420V-480V-170mA AC 0-6.3-7.5V-5A(×2), 6.3V-3A, 5V-3A ①Choke input, Full-wave rectifier : 250mA DC ②Capacitor input, Full-wave rectifier : 170mA DC | | PB-114 (5.7) | ①Single(stereo), Push pull(monoral) VT52, 6B4G, 6A3, KT66, 350B ②Single(stereo), Push pull(monoral) VT25, VT62, 50, 6L6GC, EL34 |
| PT-250 | 100V | 500V-380V-240V-0-240V-380V-500V-150mA AC (200mA DC; Full-wave rectifier) 7.5V-4.5A(×2), 6.3V-3A, 5V-3A | | PB-114 (5.7) | 10, VT25, VT25A, 801A, VT62, 50 |
| PT-240 | 100V | 480V-420V-240V-0-240V-420V-480V-170mA AC 0-2.5-5V-5.5A(×2), 6.3V-3A, 5V-3A ①Choke input, Full-wave rectifier : 250mA DC ②Capacitor input, Full-wave rectifier : 170mA DC | | PB-114 (5.7) | ①Single(stereo), Push pull(monoral) 2A3, 300B, 45, PX4, PX25 ②Single(stereo), Push pull(monoral) PX25A, DA30, 300B |
| PT-220 | 100V | 380V-320V-0-100V-320V-380V-200mA AC (280mA DC; Full-wave rectifier) 0-4V-5V-3A(×2), 0-6.3V-10V-2.5A, 5V-3A | | PB-114 (5.2) | 300B, PX25, PX4, |
| PT-180 | 100V | 280V-250V-0-60V-250V-280V-220mA AC (300mA DC; Full-wave rectifier) 6.3V-2.5A(×3), 5V-3A | | PB-102 (4.3) | 6V6, 6F6, 6L6GC, 6BM8, 6B4G 6BQ5, 7189A, R120, 42 |
| PT-160 | 100V | 320V-280V-0-280V-320V-140mA AC (190mA DC; Full-wave rectifier) 0-2.5V-6.3V-3A(×2), 6.3V-2.5A, 5V-3A | | PB-102 (3.9) | 2A3, 6A3, PX4, VT52, E406N, 6AC5, 6B4G, KT66, 6BQ5, 6F6, 6V6, 6BM8, 71A, 42, 45, 46 |
| PT-150 | 100V | 280V-250V-220V-0-220V-250V-280V-160mA AC (220mA DC; Full-wave rectifier) 0-6.3V-2A(×3), 5V-3A | | PB-102 (3.9) | 6V6, 6F6, 6BM8, 6AC5, 42, 71A, 7189A 6BQ5, 6GW8, KT88, KT66, 6550A, EL34, VT52, 6B4G, 6L6GC, 12E1 |
| PT-100 | 100V | 280V-250V-0-250V-280V-100mA AC (140mA DC; Full-wave rectifier) 0-5V-6.3V-2A(×2), 0-6.3V-2A, 5V-2A | | PB-95 (2.8) | 6F6, 6BQ5, 6AC5, (For Stereo Preamplifier) 6BM8, 71A, 6V6, 42 |
| PT-95 | 100V | 230V-200V-0-200V-230V-120mA AC (170mA DC; Full-wave rectifier) 0-5V-6.3V-2A(×2), 0-6.3V-2A, 5V-2A | | PB-95 (2.8) | WE101D, WE104D (For Stereo Preamplifier) WE311A, WE349A, 6BM8, 71A, 6K6GT, 41 |
| PT-60 | 100V | 260V-0-260V-35mA AC (50mA DC; Full-wave rectifier) 0-15V-2A, 6.3V-1A | | PB-78 (1.7) | For Stereo Preamplifier |

Power transformers with American or European primary voltage are available upon request. please contact our authorized international dealers.

●Insulation Resistance : More than 100MΩ at DC500V
●Dielectric Withstanding : AC1500V, 1min.

| Choke Coil | | (Equipped with magnetic Shield) | | | |
|------------|----------------|---------------------------------|-----------------|---------------|------------------|
| MODEL | Specifications | | | | Size Weight (Kg) |
| | Inductance | Rated DC Current | max. DC Current | DC resistance | |
| C-60-50W | 60H/15H | 50mA/100mA | 60mA/120mA | 840/210 Ω | WE-66 (1.3) |
| C-16-150W | 16H/4H | 150mA/300mA | 180mA/360mA | 200/50 Ω | WE-85 (3.0) |
| C-10-200W | 10H/2.5H | 200mA/400mA | 250mA/500mA | 140/35 Ω | WE-85 (3.0) |
| C-10-130W | 10H/2.5H | 130mA/260mA | 150mA/300mA | 160/40 Ω | WE-66 (1.3) |
| C-30-80W | 30H/7.5H | 80mA/160mA | 90mA/180mA | 440/110 Ω | WE-66 (1.3) |
| C-6-250W | 6H/1.5H | 250mA/500mA | 280mA/560mA | 88/22 Ω | WE-85 (3.0) |
| C-30-40 | 30H | 40mA | 50mA | 460 Ω | CB-60 (0.7) |
| C-1-400 | 1H | 400mA | 450mA | 18 Ω | CB-66 (0.85) |
| ☆ C-50-30 | 50H | 30mA | 40mA | 1500 Ω | WE-60 (0.85) |
| CC-10-200W | 10H/2.5H | 200mA/400mA | 230mA/450mA | 150/37Ω | PH-78 (1.8) |

☆ : Make On order, without rating plate

●Insulation Resistance : More than 100MΩ at DC500V ●Dielectric Withstanding : AC1500V, 1min.

| Choke Coil (Choke input Circuit) | | (Equipped with magnetic Shield) | | | | |
|----------------------------------|---------------------------|---------------------------------|---------------|-----------------------|------------------|------------------------|
| MODEL | Specifications | | | | Size Weight (Kg) | |
| | Inductance and DC Current | max. DC Current | DC resistance | max. AC input voltage | | min. operating Current |
| C-25-150CH | 25H-150mA | 200mA | 205 Ω | 700V MAX | 30mA MIN | WE-85 (2.4) |
| C-15-200CH | 15H-200mA | 240mA | 130 Ω | 600V MAX | 40mA MIN | WE-85 (2.4) |

●Insulation Resistance : More than 100MΩ at DC500V ●Dielectric Withstanding : AC2.0KV, 1min.

| Output Transformer | | | | Push Pull (with SG tap) | | | | | | | |
|--------------------|-------------|-----------|-----------|----------------------------|----------------|--------------------|------------|--------------------|------------|------------------|--|
| MODEL | Output (W) | Impedance | | Frequency Response (± 1dB) | Insertion Loss | Maximum DC Current | | Primary Inductance | | Size Weight (Kg) | Applications |
| | | Primary | Secondary | | | Balance | Un balance | Balance | Un balance | | |
| HW-100-5 | 100 30Hz | 5kΩ | 4, 8, 16Ω | 10 ~ 60kHz | 0.15dB | 300 mA | 5.5 mA | 200H | 125H | WE-114 (6.2) | KT-88, EL-34, EL-156 6S50A, 6L6GC, 300B |
| HW-60-5 | 60 30Hz | 5kΩ | 4, 8, 16Ω | 10 ~ 70kHz | 0.2 dB | 250 mA | 4.0 mA | 200H | 125H | WE-102 (4.1) | KT-88, EL-34, 300B 6S50A, 6L6GC |
| HW-40-10 | 40 45Hz | 10kΩ | 4, 8, 16Ω | 10 ~ 60kHz | 0.2 dB | 180 mA | 2.8 mA | 250H | 150H | WE-85 (2.4) | 6V6, VT-62/801A 6F6, VT-25/10, 42 |
| HW-40-8 | 40 45Hz | 8kΩ | 4, 8, 16Ω | 10 ~ 60kHz | 0.2 dB | 200 mA | 3.5 mA | 200H | 130H | WE-85 (2.4) | 6L6GC, 6BQ5 6F6, 6V6, KT-66 |
| HW-40-5 | 40 45Hz | 5kΩ | 4, 8, 16Ω | 10 ~ 60kHz | 0.2 dB | 250 mA | 4.0 mA | 150H | 90H | WE-85 (2.4) | EL-34, 2A3, 6A3, 45 6L6GC, 6B4G, VT52 |
| HW-25-8 | 25 45Hz | 8kΩ | 4, 8, 16Ω | 10 ~ 70kHz | 0.3 dB | 150 mA | 3.5 mA | 180H | 110H | WE-85 (2.4) | 6V6, 6BQ5, 71A 6F6, 7189A |
| HW-25-5 | 25 45Hz | 5kΩ | 4, 8, 16Ω | 10 ~ 70kHz | 0.3 dB | 200 mA | 4.0 mA | 130H | 80H | WE-85 (2.4) | 2A3, 6B4G, VT52 6A3, 6BM8 |
| HW-15-8 | 15 50Hz | 8kΩ | 4, 8, 16Ω | 15 ~ 50kHz | 0.35 dB | 120 mA | 5.0 mA | 120H | 85H | WE-66 (1.3) | 6V6, 6BQ5, 6BX7, 6F6, 6AC5, 6GW8 |
| HW-15-5 | 15 50Hz | 5kΩ | 4, 8, 16Ω | 15 ~ 50kHz | 0.35 dB | 150 mA | 5.0 mA | 75H | 60H | WE-66 (1.3) | VT52, 2A3, 6BM8 6B4G, 71A, 6L6(T) |
| HWC-30-8 | 30 50Hz | 8kΩ | 4, 8, 16Ω | 10 ~ 50kHz | 0.2 dB | 160 mA | 5.0 mA | 160H | 120H | PL-85B (2.0) | 6L6GC, 6BQ5 6F6, 6V6, KT-66 |
| HWC-30-5 | 30 50Hz | 5kΩ | 4, 8, 16Ω | 10 ~ 50kHz | 0.2 dB | 220 mA | 5.0 mA | 100H | 80H | PL-85B (2.0) | EL-34, 2A3, 6A3, 45 6L6GC, 6B4G, VT52 |

●Insulation Resistance : More than 100MΩ at DC500V ●Dielectric Withstanding : AC1500V, 1min.

| Output Transformer | | | | Single (with SG tap) | | | | ※ Without SG tap | | | |
|--------------------|------------|---------------|-----------|----------------------------|----------------|---|--------------------|------------------|--|--|--|
| MODEL | Output (W) | Impedance | | Frequency Response (± 2dB) | Insertion Loss | Primary inductance / DC Currentt | Maximum DC Current | Size Weight (Kg) | Applications | | |
| | | Primary | Secondary | | | | | | | | |
| H-30-5S | 30 30Hz | 5kΩ | 4, 8, 16Ω | 25 ~ 70kHz | 0.3 dB | 25H / 80mA | 160 mA | WE-102 (4.1) | PX-25, UX-50 DA-30/PX-25A | | |
| H-30-3.5S | 30 30Hz | 3.5kΩ | 4, 8, 16Ω | 25 ~ 80kHz | 0.3 dB | 20H / 100mA | 200 mA | WE-102 (4.1) | 300B, PX25 6S50A, 6L6GC | | |
| ※ H-20-14U | 20 50Hz | 10kΩ / 14kΩ | 4, 8, 16Ω | 30 ~ 50kHz | 0.3 dB | 40H / 50mA(10kΩ) 50H / 45mA(14kΩ) | 80 mA | WE-85 (2.4) | 6V6, VT-62/801A, 42 6F6, VT-25/10 | | |
| H-20-7U | 20 50Hz | 5kΩ / 7kΩ | 4, 8, 16Ω | 25 ~ 70kHz | 0.3 dB | 23H / 70mA(5kΩ) 30H / 60mA(7kΩ) | 100 mA | WE-85 (2.4) | 6V6, 6L6GC, 6BQ5 6F6, KT-66, VT52, 45 | | |
| H-20-3.5U | 20 50Hz | 2.5kΩ / 3.5kΩ | 4, 8, 16Ω | 25 ~ 90kHz | 0.3 dB | 13H / 100mA(2.5kΩ) 18H / 80mA(3.5kΩ) | 140 mA | WE-85 (2.4) | 300B, EL-34, 2A3 6B4G, 6L6GC, 6A3 | | |
| New H-20-600 | 20 50Hz | 600Ω | 4, 8, 16Ω | 30 ~ 100kHz | 0.4 dB | 2.3H / 300mA | 320 mA | WE-85 (2.4) | 6C33C | | |
| H-507S | 7 50Hz | 5kΩ / 7kΩ | 4, 8, 16Ω | 45 ~ 100kHz ± 3dB | 0.6 dB | 15H / 50mA(5kΩ) 20H / 40mA(7kΩ) | 65 mA | WE-66 (1.3) | 6V6, 6BQ5, 71A 6F6, 7189A, 6AC5 | | |
| H-203S | 7 50Hz | 2.5kΩ / 3.5kΩ | 4, 8, 16Ω | 45 ~ 100kHz ± 3dB | 0.6 dB | 6.5H / 70mA(2.5kΩ) 9H / 60mA(3.5kΩ) | 90 mA | WE-66 (1.3) | 2A3, 6B4G, 6A3, 300B 6L6, EL34, PX4, KT88 | | |
| HC-507U | 20 50Hz | 5kΩ / 7kΩ | 4, 8, 16Ω | 30 ~ 45kHz | 0.6 dB | 20H / 70mA(5kΩ) 26H / 60mA(7kΩ) | 100 mA | PL-85B (2.0) | 6V6, 6L6GC, 6BQ5 6F6, KT-66, VT52, 45 | | |
| HC-203U | 20 50Hz | 2.5kΩ / 3.5kΩ | 4, 8, 16Ω | 30 ~ 60kHz | 0.6 dB | 10H / 100mA(2.5kΩ) 13H / 80mA(3.5kΩ) | 130 mA | PL-85B (2.0) | 300B, EL-34, 2A3 6B4G, 6L6GC, 6A3 | | |

●Insulation Resistance : More than 100MΩ at DC500V ●Dielectric Withstanding : AC1500V, 1min.

| Interstage Driver Transformer | | | Single / Push Pull | | | | |
|-------------------------------|-------------------|-------------|----------------------------|---------------------|---------------------------------------|------------------|-------------------------------|
| MODEL | Primary Impedance | Turns Ratio | Frequency Response (± 2dB) | Primary Impedance | Primary DC Currentt Series / Parallel | Size Weight (Kg) | Applications |
| A-107 | 7kΩ | 1×2 : 2×2 | 25 ~ 25kHz | 70H-10mA 80H-5mA | 10mA / 20mA | WE-60 (0.8) | 12AU7, 76 6SN7, 5687 |
| A-105 | 5kΩ | 1×2 : 1×2 | 25 ~ 40kHz | 50H-15mA 60H-7mA | 15mA / 30mA | WE-60 (0.8) | 5687, 6AH4GT 6S4A, 6BQ5(T) |

●Insulation Resistance : More than 100MΩ at DC500V ●Dielectric Withstanding : AC1500V, 1min.

| Line Output Transformer | | | Single / Push Pull | | | | |
|-------------------------|-----------|-----------------|----------------------------|----------------|------------------|--------------------|------------------|
| MODEL | Impedance | | Frequency Response (- 2dB) | Insertion Loss | Rated DC Current | Maximum DC Current | Size Weight (Kg) |
| | Primary | Secondary | | | | | |
| HL-20K-6 | 20kΩ | 600Ω/150Ω Split | 25 ~ 45kHz | 0.7 dB | 15mA | 30mA | WE-60 (0.8) |
| HL-10K-6 | 10kΩ | 600Ω/150Ω Split | 20 ~ 45kHz | 0.7 dB | 15mA | 35mA | WE-60 (0.8) |

●Insulation Resistance : More than 100MΩ at DC500V ●Dielectric Withstanding : AC1500V, 1min.

| Input Transformer | | | | | | | |
|-------------------|------------|------------|---------------------------|-------------|----------------|--|------------------|
| MODEL | Impedance | | Frequency Response (-1dB) | Turns Ratio | Insertion Loss | Maximum Secondary output voltage (0.5% distortion at 30Hz) | Size Weight (Kg) |
| | Primary | Secondary | | | | | |
| HI-6-47K | 600Ω Split | 47KΩ Split | 10 ~ 20kHz | 1 : 8.8 | 0.4 dB | 15V | WE-60 (0.8) |
| HI-6-10K | 600Ω Split | 10KΩ Split | 10 ~ 50kHz | 1 : 4.1 | 0.4 dB | 10V | WE-60 (0.8) |

●Insulation Resistance : More than 100MΩ at DC250V ●Dielectric Withstanding : AC250V,1min.

| MC Stepup Transformer | | | For MC Phono Pickup Cartridge | | | | |
|-----------------------|--|--------------------------|-------------------------------------|------------------|--|----------------|------------------|
| MODEL | Primary Impedance | Secondary Load Impedance | | Stepup Rate/Gain | Frequency Response (-1dB) | Insertion Loss | Size Weight (Kg) |
| | | Rated Load Impedance | Recommendation Rated Load Impedance | | | | |
| HM-3 | Primary Series Connection 12 (7~40) | 4.7KΩ | 47KΩ | 20Times / 26dB | 15 ~ 50kHz (Secondary load :4.7KΩ) | 1.5 dB | WE-60L (0.5) |
| | Primary Parallel Connection 3 (2~7) | 4.7KΩ | 47KΩ | 40Times / 32dB | | | |
| HM-X | Primary Series Connection 12 (7~40) | 2.7KΩ | 47KΩ | 15Times / 23dB | 15 ~ 100kHz (Secondary load :2.7KΩ) | 1.5 dB | WE-60L (0.5) |
| | Primary Parallel Connection 3 (2~7) | 2.7KΩ | 47KΩ | 30Times / 29dB | | | |
| HM-7 | Primary Series Connection 12 (7~40) | 2.7KΩ | 47KΩ | 15Times / 23dB | 10 ~ 80kHz (Secondary load :2.7KΩ) | 2.3 dB | WE-60L (0.5) |
| | Primary Parallel Connection 3 (2~7) | 2.7KΩ | 47KΩ | 30Times / 29dB | | | |

●Insulation Resistance : More than 100MΩ at DC250V ●Dielectric Withstanding : AC250V,1min.

| Equalizer Coils | | | For LCR type Phono Equalizer | | | |
|-----------------|----------|------------|------------------------------|---------------|------------------|--|
| MODEL | Contents | Inductance | Terminal No. | DC resistance | Size Weight (Kg) | |
| H-EQL | L L | 1.9H | 5 - 7 | 20Ω | WE-60L (0.4) | |
| | L H | 45mH | 1 - 9 | 5.5Ω | | |

Information in this document is subject to change without notice



HASHIMOTO ELECTRIC CO., LTD.

Tateishi 2-17-11, Katushika-ku, Tokyo 124-0012, Japan

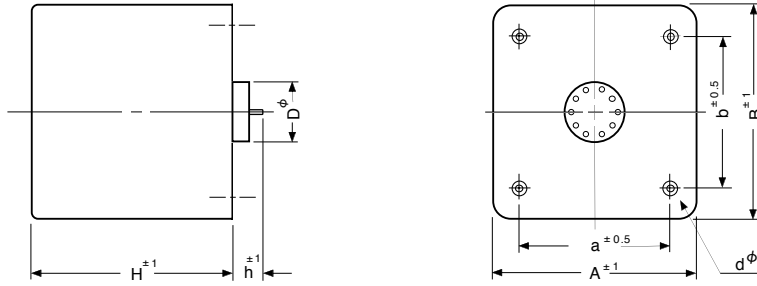
Tel. 81-3-3691-4173 Fax. 81-3-3691-9416

<http://www.hashimoto-trans.co.jp>

<Sept, 2013>

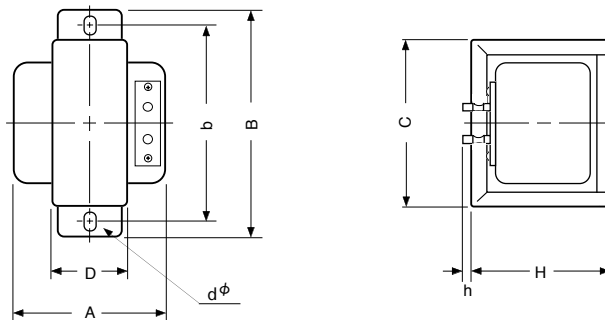
Dimensions

WE Type



| Model | Style | Dimensions(mm) | | | | | | | | | | |
|------------|--------|----------------|-----|----|----|---|---|-----|----|----------|----------|-------------|
| | | A | B | a | b | C | D | H | h | d ϕ | D ϕ | Weight (Kg) |
| HW-100-5 | WE-114 | 124 | 136 | 80 | 80 | — | — | 120 | 15 | M4 | 29 | 6.2 |
| HW-60-5 | WE-102 | 100 | 110 | 80 | 80 | — | — | 120 | 15 | M4 | 29 | 4.1 |
| HW-40-10 | WE-85 | 80 | 88 | 55 | 60 | — | — | 110 | 15 | M4 | 29 | 2.4 |
| HW-40-8 | WE-85 | 80 | 88 | 55 | 60 | — | — | 110 | 15 | M4 | 29 | 2.4 |
| HW-40-5 | WE-85 | 80 | 88 | 55 | 60 | — | — | 110 | 15 | M4 | 29 | 2.4 |
| HW-25-8 | WE-85 | 80 | 88 | 55 | 60 | — | — | 110 | 15 | M4 | 29 | 2.4 |
| HW-25-5 | WE-85 | 80 | 88 | 55 | 60 | — | — | 110 | 15 | M4 | 29 | 2.4 |
| HW-15-8 | WE-66 | 66 | 66 | 40 | 40 | — | — | 85 | 15 | M3 | 29 | 1.3 |
| HW-15-5 | WE-66 | 66 | 66 | 40 | 40 | — | — | 85 | 15 | M3 | 29 | 1.3 |
| H-30-5S | WE-102 | 100 | 110 | 80 | 80 | — | — | 120 | 15 | M4 | 29 | 4.1 |
| H-30-3.5S | WE-102 | 100 | 110 | 80 | 80 | — | — | 120 | 15 | M4 | 29 | 4.1 |
| H-20-14U | WE-85 | 80 | 88 | 55 | 60 | — | — | 110 | 15 | M4 | 29 | 2.4 |
| H-20-7U | WE-85 | 80 | 88 | 55 | 60 | — | — | 110 | 15 | M4 | 29 | 2.4 |
| H-20-3.5U | WE-85 | 80 | 88 | 55 | 60 | — | — | 110 | 15 | M4 | 29 | 2.4 |
| H-20-600 | WE-85 | 80 | 88 | 55 | 60 | — | — | 110 | 15 | M4 | 29 | 2.4 |
| H-507S | WE-66 | 66 | 66 | 40 | 40 | — | — | 85 | 15 | M3 | 29 | 1.3 |
| H-203S | WE-66 | 66 | 66 | 40 | 40 | — | — | 85 | 15 | M3 | 29 | 1.3 |
| A-107 | WE-60 | 58 | 52 | 40 | 40 | — | — | 85 | 15 | M3 | 29 | 0.8 |
| A-105 | WE-60 | 58 | 52 | 40 | 40 | — | — | 85 | 15 | M3 | 29 | 0.8 |
| HL-20K-6 | WE-60 | 58 | 52 | 40 | 40 | — | — | 85 | 15 | M3 | 29 | 0.8 |
| HL-10K-6 | WE-60 | 58 | 52 | 40 | 40 | — | — | 85 | 15 | M3 | 29 | 0.8 |
| HI-6-47K | WE-60 | 58 | 52 | 40 | 40 | — | — | 85 | 15 | M3 | 29 | 0.8 |
| HI-6-10K | WE-60 | 58 | 52 | 40 | 40 | — | — | 85 | 15 | M3 | 29 | 0.8 |
| HM-3 | WE-60L | 58 | 52 | 40 | 40 | — | — | 55 | 15 | M3 | 29 | 0.5 |
| HM-X | WE-60L | 58 | 52 | 40 | 40 | — | — | 55 | 15 | M3 | 29 | 0.5 |
| HM-7 | WE-60L | 58 | 52 | 40 | 40 | — | — | 55 | 15 | M3 | 29 | 0.5 |
| H-EQL | WE-60L | 58 | 52 | 40 | 40 | — | — | 55 | 15 | M3 | 29 | 0.4 |
| C-16-150W | WE-85 | 80 | 88 | 55 | 60 | — | — | 110 | 15 | M4 | 29 | 3.0 |
| C-10-200W | WE-85 | 80 | 88 | 55 | 60 | — | — | 110 | 15 | M4 | 29 | 3.0 |
| C-6-250W | WE-85 | 80 | 88 | 55 | 60 | — | — | 110 | 15 | M4 | 29 | 3.0 |
| C-25-150CH | WE-85 | 80 | 88 | 55 | 60 | — | — | 110 | 15 | M4 | 29 | 2.4 |
| C-15-200CH | WE-85 | 80 | 88 | 55 | 60 | — | — | 110 | 15 | M4 | 29 | 2.4 |
| C-60-50W | WE-66 | 66 | 66 | 40 | 40 | — | — | 85 | 15 | M3 | 29 | 1.3 |
| C-30-80W | WE-66 | 66 | 66 | 40 | 40 | — | — | 85 | 15 | M3 | 29 | 1.3 |
| C-10-130W | WE-66 | 66 | 66 | 40 | 40 | — | — | 85 | 15 | M3 | 29 | 1.3 |
| C-50-30 | WE-60 | 58 | 52 | 40 | 40 | — | — | 85 | 15 | M3 | 29 | 0.85 |

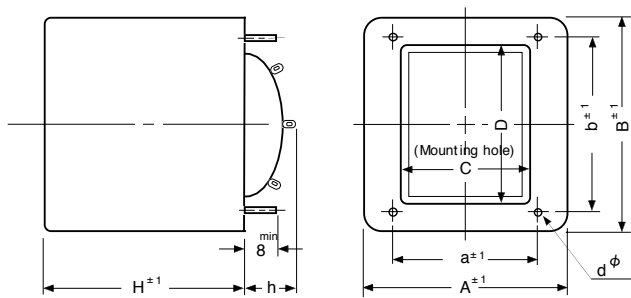
CB Type



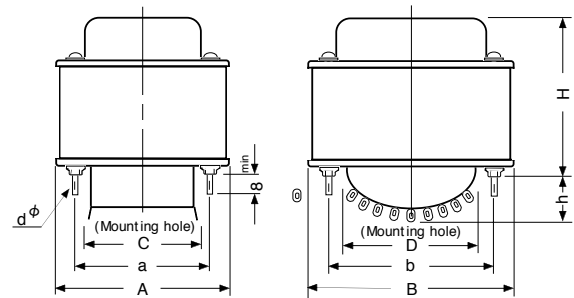
| Model | Style | Dimensions(mm) | | | | | | | | | |
|-----------|---------|----------------|----|---|----|----|----|----|---|----------|-------------|
| | | A | B | a | b | C | D | H | h | d ϕ | Weight (Kg) |
| C -1 -400 | CB - 66 | 63 | 90 | — | 80 | 71 | 32 | 60 | 3 | 4.5X6.5 | 0.85 |
| C -30 -40 | CB - 60 | 62 | 86 | — | 75 | 62 | 33 | 54 | 3 | 4.5X6.5 | 0.7 |

Dimensions

WEPT Type

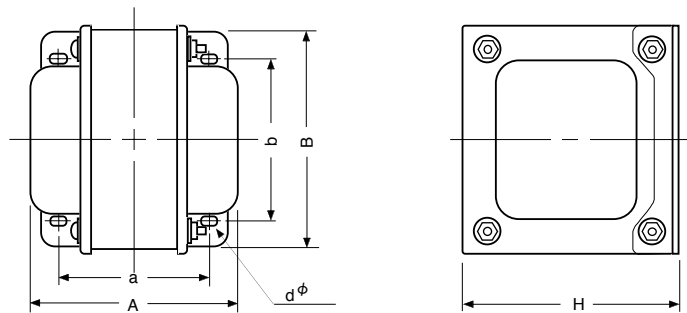


PB Type



| Model | Style | Dimensions(mm) | | | | | | | | | Weight (Kg) |
|---------|----------|----------------|-----|----|----|----|----|-----|----|-----|-------------|
| | | A | B | a | b | C | D | H | h | dφ | |
| PT-400B | WEPT-114 | 124 | 136 | 76 | 95 | 65 | 83 | 120 | 25 | M 4 | 8.1 |
| PT-310B | PB-114 | 100 | 120 | 76 | 95 | 65 | 83 | 110 | 32 | M 4 | 5.9 |
| PT-300B | PB-114 | 100 | 120 | 76 | 95 | 65 | 83 | 110 | 32 | M 4 | 5.9 |
| PT-270 | PB-114 | 100 | 120 | 76 | 95 | 65 | 83 | 110 | 32 | M 4 | 5.8 |
| PT-260 | PB-114 | 100 | 120 | 76 | 95 | 65 | 83 | 110 | 32 | M 4 | 5.7 |
| PT-250 | PB-114 | 100 | 120 | 76 | 95 | 65 | 83 | 110 | 32 | M 4 | 5.7 |
| PT-240 | PB-114 | 100 | 120 | 76 | 95 | 65 | 83 | 110 | 32 | M 4 | 5.7 |
| PT-220 | PB-114 | 100 | 120 | 76 | 95 | 65 | 83 | 100 | 32 | M 4 | 5.2 |
| PT-180 | PB-102 | 93 | 107 | 70 | 87 | 60 | 81 | 95 | 32 | M 4 | 4.3 |
| PT-160 | PB-102 | 93 | 107 | 70 | 87 | 60 | 81 | 85 | 32 | M 4 | 3.9 |
| PT-150 | PB-102 | 93 | 107 | 70 | 87 | 60 | 81 | 85 | 32 | M 4 | 3.9 |
| PT-100 | PB-95 | 86 | 100 | 65 | 80 | 56 | 71 | 73 | 32 | M 4 | 2.8 |
| PT-95 | PB-95 | 86 | 100 | 65 | 80 | 56 | 71 | 73 | 32 | M 4 | 2.8 |
| PT-60 | PB-78 | 70 | 83 | 54 | 66 | 48 | 57 | 69 | 28 | M 4 | 1.7 |

PH / PL Type



| Model | Style | Dimensions(mm) | | | | | | | | | Weight (Kg) |
|------------|----------|----------------|----|----|----|---|---|----|---|---------|-------------|
| | | A | B | a | b | C | D | H | h | dφ | |
| HC -507U | PL - 85B | 90 | 90 | 65 | 74 | — | — | 83 | — | 4.5X7.5 | 2.0 |
| HC -203U | PL - 85B | 90 | 90 | 65 | 74 | — | — | 83 | — | 4.5X7.5 | 2.0 |
| HWC-30-8 | PL - 85B | 90 | 90 | 65 | 74 | — | — | 83 | — | 4.5X7.5 | 2.0 |
| HWC-30-5 | PL - 85B | 90 | 90 | 65 | 74 | — | — | 83 | — | 4.5X7.5 | 2.0 |
| CC-10-200W | PH -78 | 86 | 70 | 65 | 52 | — | — | 83 | — | 4.5X7 | 1.8 |